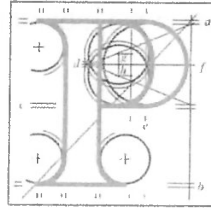


**r Case Number:** ACP-324062-26

**Planning Authority Reference Number:** 2560393



**An  
Coimisiún  
Pleanála**

Ennis Golf Club  
Philip Brigdale, President  
Drumbiggle Road  
Ennis  
Co. Clare

**Date:** 23 February 2026

**Re:** Large-Scale Residential Development (LRD) for 300 housing units, a creche/childcare facility and all associated site development works. An Environmental Impact Assessment Report (EIAR) and a Natura Impact Statement (NIS) were submitted with the application. The application may be inspected online at: [www.ennislrd.ie](http://www.ennislrd.ie)  
Ballymacaula, Drumbiggle, Keelty, Circular Road, Ennis, Co. Clare.

Dear Sir / Madam,

An Coimisiún Pleanála has received your letter in which you intended to make a submission or observation in relation to a large-scale residential development appeal under the Planning and Development Act, 2000, (as amended).

Section 130(1)(c)(v) of the 2000 Act, (as amended), provides for the payment of fees with submissions or observations. In accordance with a determination of fees by the Commission under section 144 of the Planning and Development Act, 2000, (as amended), the fee required for a submission or observation is €50. Your submission or observation was not accompanied by the said fee and it is regretted that it must, therefore, be regarded as an invalid submission in accordance with section 130(2) of the Act. To lodge a valid submission or observation you must comply with ALL of the requirements of section 130.

You are reminded that the last day for making a valid submission or observation is 4 weeks beginning on the day of receipt of the appeal by the Commission or where there is more than one appeal against the decision of the planning authority, on the day the last appeal was received by the Commission. The Commission received the last appeal on 09 February 2026.

Please also note that where the final date falls on a Saturday, a Sunday, a public holiday or any other day on which the offices of the Commission are closed, an observation or submission shall be valid as having been made in time if received by the Commission on the next following day on which the offices of the Commission are open.

The documents lodged by you are enclosed.

|                           |                |  |
|---------------------------|----------------|--|
| <b>Teil</b>               | <b>Tel</b>     | (01) 858 8100  |
| <b>Glaó Áitiúil</b>       | <b>LoCall</b>  | 1800 275 175   |
| <b>Facs</b>               | <b>Fax</b>     | (01) 872 2684  |
| <b>Láithreán Gréasáin</b> | <b>Website</b> | <a href="http://www.pleanala.ie">www.pleanala.ie</a>                       |
| <b>Ríomhphost</b>         | <b>Email</b>   | <a href="mailto:communications@pleanala.ie">communications@pleanala.ie</a> |

|                      |                       |
|----------------------|-----------------------|
| 64 Sráid Maoilbhríde | 64 Marlborough Street |
| Baile Átha Cliath 1  | Dublin 1              |
| D01 V902             | D01 V902              |

If you have any queries in the meantime, please contact the undersigned officer of the Commission  
appeals@pleanala.ie.

Yours faithfully,

*P.P. Karen Byrne*  
Lita Clarke  
Executive Officer  
Direct Line: 01-8737158

LRD45T

Tel  
Glaó Áitiúil  
Facs  
Láithreán Gréasáin  
Riomhphost

Tel (01) 858 8100  
LoCall 1800 275 175  
Fax (01) 872 2684  
Website [www.pleanala.ie](http://www.pleanala.ie)  
Email [communications@pleanala.ie](mailto:communications@pleanala.ie)

64 Sráid Maoilbhríde  
Baile Átha Cliath 1  
D01 V902

64 Marlborough Street  
Dublin 1  
D01 V902